

Hanging Graphics Hardware



Digital print (not included), attached to StandOff Mount.

Supports for the Digital Image Revolution

- Artists everywhere are printing on metal panels, and the images are often eye popping
- Increase impact by using our new Floating Stand Off Mounts – today's new modern way to display digital prints
- Prints are set off the wall an inch creating a floating frameless effect, with no visible hardware



Graphic attaches to StandOff Mount with High Bond Tape.

Color 

-S Satin Silver

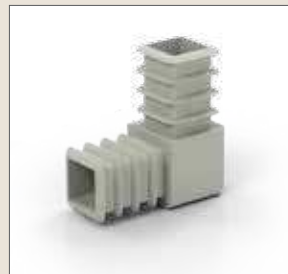


High Bond Tape is supplied to hold graphics to StandOff Mounts.



Floating StandOff Mount hangs from wall cleat.

Components - Available in kits or a la carte



Right angle push in corners.



1" square aluminum, quick, tool-free assembly.



Top section hangs from wall cleat.



Wall mount cleat includes mounting holes.

Security options available to "lock" frame to wall.

Floating StandOff Mounts™ Hanging Graphics Hardware

Float your Digital Print Off the Wall

- Our new Floating StandOff Mounts – a dramatic approach to display your digital prints
- Prints are set off the wall creating a shadow effect to add depth, framelessly, with no visible hardware
- Our system hangs on the wall with an intrinsic “French Cleat” design

Bulk Components

Model	Components
OATCL4	1" Square "L" Corners (Bag of 4)
OATCL100	1" Square "L" Corners (Bag of 100)
OATCSQ72	1" Square Aluminum 72" long
OATCCR72	1" Square Aluminum Cleat Receptive 72" long
OATCF72	French Cleat 72" Long
OATCHB100	High Bond Tape, Pack of 100 pcs., 3" long

Complete Kits

Includes StandOff Mount and aluminum mounting cleat, & high bond mounting tape.

Model	StandOff Mount	Suggested Graphic Size
OAT1818	18" x 18"	24"x 24" Graphic recessed 3"
OAT1830	18" x 30"	24"x 36" Graphic recessed 3"
OAT2434	24" x 34"	30"x 40" Graphic recessed 3"
OAT3042	30" x 42"	36"x 48" Graphic recessed 3"
OAT4266	42" x 66"	48"x 72" Graphic recessed 3"



Assembled StandOff Mounts staged ready to bond to graphics. Designed for production runs.



Custom Requests Encouraged!

Specify Orientation*

- H Horizontal (Landscape)
- V Vertical (Portrait)